

Алматы (727)345-47-04
Ангарск (3955)60-70-56
Архангельск (8182)63-90-72
Астрахань (8512)99-46-04
Барнаул (3852)73-04-60
Белгород (4722)40-23-64
Благовещенск (4162)22-76-07
Брянск (4832)59-03-52
Владивосток (423)249-28-31
Владикавказ (8672)28-90-48
Владимир (4922)49-43-18
Волгоград (844)278-03-48
Вологда (8172)26-41-59
Воронеж (473)204-51-73
Екатеринбург (343)384-55-89

Россия +7(495)268-04-70

Иваново (4932)77-34-06
Ижевск (3412)26-03-58
Иркутск (395)279-98-46
Казань (843)206-01-48
Калининград (4012)72-03-81
Калуга (4842)92-23-67
Кемерово (3842)65-04-62
Киров (8332)68-02-04
Коломна (4966)23-41-49
Кострома (4942)77-07-48
Краснодар (861)203-40-90
Красноярск (391)204-63-61
Курск (4712)77-13-04
Курган (3522)50-90-47
Липецк (4742)52-20-81

Казахстан +7(727)345-47-04

Магнитогорск (3519)55-03-13
Москва (495)268-04-70
Мурманск (8152)59-64-93
Набережные Челны (8552)20-53-41
Нижний Новгород (831)429-08-12
Новокузнецк (3843)20-46-81
Ноябрьск (3496)41-32-12
Новосибирск (383)227-86-73
Омск (3812)21-46-40
Орел (4862)44-53-42
Оренбург (3532)37-68-04
Пенза (8412)22-31-16
Петрозаводск (8142)55-98-37
Псков (8112)59-10-37
Пермь (342)205-81-47

Беларусь +(375)257-127-884

Ростов-на-Дону (863)308-18-15
Рязань (4912)46-61-64
Самара (846)206-03-16
Санкт-Петербург (812)309-46-40
Саранск (8342)22-96-24
Саратов (845)249-38-78
Севастополь (8692)22-31-93
Симферополь (3652)67-13-56
Смоленск (4812)29-41-54
Сочи (862)225-72-31
Ставрополь (8652)20-65-13
Сургут (3462)77-98-35
Сыктывкар (8212)25-95-17
Тамбов (4752)50-40-97
Тверь (4822)63-31-35

Узбекистан +998(71)205-18-59

Тольятти (8482)63-91-07
Томск (3822)98-41-53
Тула (4872)33-79-87
Тюмень (3452)66-21-18
Улан-Удэ (3012)59-97-51
Ульяновск (8422)24-23-59
Уфа (347)229-48-12
Хабаровск (4212)92-98-04
Чебоксары (8352)28-53-07
Челябинск (351)202-03-61
Череповец (8202)49-02-64
Чита (3022)38-34-83
Якутск (4112)23-90-97
Ярославль (4852)69-52-93

Киргизия +996(312)96-26-47

<https://mahle.nt-rt.ru> || men@nt-rt.ru

Мощные модели для обслуживания кондиционеров ArcticPRO



MAHLE ArcticPRO®

These units are cutting edge when it comes to connectivity and ease of maintenance, with Bluetooth and WiFi, a large touch screen, a status monitoring app, and remote service.

The new generation of service units



EGEA Label

the EGEA label stands for the quality and functionality of professional workshop equipment products. A device that has been developed and designed in accordance with the EGEA specification fulfills all legal requirements and safety standards. The label certifies that MAHLE develops high-quality and effective service units for workshops.

E³ Technology

E³ technology from MAHLE ensures A/C Services are ecological, economical, and efficient. Workshops that choose A/C Service units from MAHLE also benefit from our Europe-wide service network, technical support, thorough instruction, and comprehensive training.

Always by your side

The formula for A/C Service units from MAHLE:

E³ = Ecological × Economical × Efficient

E³ – FILL: Always ready for use, regardless of the vehicle and ambient temperature. Benefit: Successful filling guaranteed.

E³ – PUMP: The internal cleansing process for the vacuum pump significantly extends oil change intervals. Up to 1,000 operating hours. Benefit: Significantly reduced maintenance costs.

E³ – CONNECT: Complete recovery of refrigerant from hoses and couplings. Benefit: No loss of expensive refrigerant.

RE.SOLVE

For MAHLE A/C Service units ArcticPRO® Continued support, even remotely.

- RE.SOLVE is MAHLE remote system, allowing owners of the device to profit from immediate technical assistance, even remotely
- Just ask for technical support, and, through a dedicated function, provide the unique code generated by the device and clearly shown on the display
- The authorized technical service operator will then be able to remotely take control of the device and provide suitable assistance

A healthy air conditioning

The replacement of the filter-dryer every 2 years and also of the cabin filter once a year or every 15.000 km completes the A/C Service. It can be done with the regular A/C checks and allows the workshop to offer the customer a complete service and a healthy air conditioning.

A/C check

(once a year/every 15,000 km)

- Replace the cabin filter
- Visually inspect all components
- Perform function and performance test
- If necessary, disinfect the evaporator

A/C Service (every two years)

- Perform all services included in the A/C check (see above)
- Replace the filter-drier
- Change the refrigerant
- Check leaktightness
- If necessary, disinfect the evaporator

Change the cabin filter

It filters dust, pollen, and dirt particles out of the air before they can reach you in the cabin. The air conditioning check therefore always includes the regular replacement of the cabin filter, improving the quality of the air and increasing safety.

Good to know!

In comparison with conventional cabin filters, MAHLE's CareMetix® cabin filters ensure that no intensive odors, mold, bacteria, or allergens enter the vehicle interior.

Replace the filter-drier

The filter-drier removes dirt particles from the refrigerant and absorbs moisture. As the capacity of the filter-drier is limited, it must be regularly replaced so that the A/C system can function reliably.

Disinfect the evaporator

Condensation builds up in the inaccessible, dark, and dank environment between the fins of the evaporator — a breeding ground for bacteria and fungi. That's why the evaporator is disinfected during the A/C check.

Evaporator



Without A/C maintenance

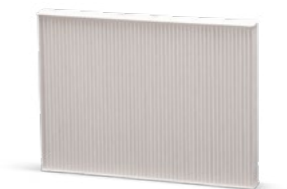


With A/C maintenance

Cabin-filter

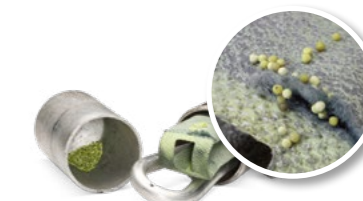


Without A/C maintenance



With A/C maintenance

Filter-drier



Without A/C maintenance



With A/C maintenance

ArcticPRO® ACX 310 | ACX 410



Advantages at a glance

- Efficient and successful servicing, regardless of the vehicle and ambient temperature
- USB interface for software updates, remote diagnostics
- Extremely compact; ideal mobile solution

Weighs just 65 kg and is extremely compact: our entry-level units

With the ArcticPRO® ACX 310 the ArcticPRO® ACX 410 your workshop can advance to the highest technological level in air conditioning servicing without major investment, while also guaranteeing maximum protection for the environment. Seize this competitive advantage and get ahead of the competition!. These stations incorporates all the technical finesse of our large AC stations range. They are also compact, mobile and sturdy.

Using ACX 310 and ACX 410 is simple and intuitive, making them a perfect second unit or an ideal mobile solution.

The ArcticPRO® ACX 310 with optional Agricultural database is the perfect assistant to every agricultural and construction machinery engineer. The agricultural machine database and a special multi-stage program optimise the recharging process and fine-tune it to the specific requirements of A/C units that are difficult to access using extended hoses.

ArcticPRO® ACX 320 | ACX 420



Advantages at a glance

- Efficient and successful servicing, regardless of the vehicle and ambient temperature
- USB interface, WiFi, Bluetooth for remote diagnostics, software updates, and ASA connectivity
- Active Oil Protection: hermetically sealed oil containers (optional)
- LED light indicates status anywhere in the workshop

Attractive price/performance ratio; accurate and fully automated work processes: the entry-level ArcticPRO® model

ArcticPRO® ACX 320 (R134a) and ArcticPRO® ACX 420 (R1234yf) look simple, but are extremely performing, providing you with the extraordinary MAHLE technology.

The accurate design is also expressed in the practical use of the One-Touch opening system.

The 7" Touchscreen interface guides the less experienced operator and allows the more experienced user to maintain total control of the service.

The WiFi connection ensures constant updating and connecting the station to your printer for the service report at the end.

ArcticPRO® ACX 320, supplied for systems operating with R134a gas, it can easily be converted into R1234yf or the new R513a.

Features	Technical data
E ³ – FILL E ³ – PUMP	Dimensions: 544 x 617 x 957 mm
High Resolution display	Weight: 65 kg
Database for service data (R134a ACX 310 - R1234yf ACX 410)	Reservoir capacity 12 l
Easy activation via App	Export of reports as pdf files via USB pen drive
Non condensable gas: Automatic check/manual release for ArcticPRO® ACX 310; Automatic for ArcticPRO® ACX 410	Optional: E ³ – CONNECT; Thermal printer for customer reports; Hybrid Function; N-Leak test Function (with external optional kit); Gas identifier; Agricultural and construction machinery database (ACX 310 only)
Oil bottles: 2 (fresh oil, used oil)	
Remote assistance (ACX Manager - USB)	

Features	Technical data
E ³ – FILL E ³ – PUMP	Dimensions: 620 x 720 x 1090 mm
7" high visibility Touchscreen display	Weight 74 kg
One-Touch liftdoor system	Reservoir capacity: 12 l
Database for service data	
Automatic purging of non-condensing gas	Optional: E ³ – CONNECT; Thermal printer for customer reports; Hybrid Function; N-Leak test Function (with external optional kit); Gas identifier; ASA connectivity via Windows PC Service; Agricultural and construction machinery database (only ACX 320)
Oil bottles : 2 (fresh oil, used oil)	
Remote assistance (RE.SOLVE - WIFI)	

ArcticPRO® ACX 350 | ACX 450



Advantages at a glance

- Efficient and successful servicing, regardless of the vehicle and ambient temperature
- USB interface, WiFi, Bluetooth for remote diagnostics, software updates, and ASA connectivity
- Active Oil Protection: hermetically sealed oil containers
- LED light indicates status anywhere in the workshop
- AC Remote Viewer App: for remotely viewing the display from your Smartphone with SMS sender service (optional)

Convenient, fast, intuitive; meets the highest requirements in A/C servicing: our professional units

ArcticPRO® ACX 350 (R134a) and ArcticPRO® ACX 450 (R1234yf) are the perfect compromise for those who want a complete station, equipped with the UV Test function and the ArcticPRO® technologies, at a convenient price level.

The New Oil bottle and the UV Tracer bottle are both equipped with Active Oil Protection system, the special lid that prevents any contamination from moisture found in the air.

ArcticPRO® ACX 350 and ArcticPRO® ACX 450 can connect to MAHLE diagnostic devices to enhance the management of particular maintenance functions.

Simple to use, thanks to the intuitive graphics of its touch interface, and due to its capacitive display that allows to operate even when wearing protective gloves. All updates, software and databases, are self-installed via the integrated WiFi connection. ArcticPRO® ACX 350 can be easily converted for managing the R1234yf, or if necessary, also the new R513a, thanks to convenient conversion kits and special software.

Features	Technical data
E³ – FILL E³ – PUMP E³ – CONNECT	Dimensions: 620 x 720 x 1090 mm
7" high visibility Touchscreen display	Weight: 74 kg
One-Touch liftdoor system	Reservoir capacity: 20 l
Database for service data	
Automatic purging of non-condensing gas	Optional: Thermal printer for customer reports; Integrated N-Leak test Function (can be activated via GoLive); Gas identifier; ASA connectivity via Windows PC Service; VCI A/C diagnostics (SW & HW); Agricultural and construction machinery database (only ACX 350)
Oil bottles : 3 + 1 - fresh oil (PAG), used oil, UV additive + POE	
Remote assistance (RE.SOLVE - WIFI)	

ArcticPRO® ACX 380 | ACX 480



Advantages at a glance

- Efficient and successful servicing, regardless of the vehicle and ambient temperature
- USB interface, WiFi, Bluetooth for remote diagnostics, software updates, and ASA connectivity
- Active Oil Protection: hermetically sealed oil containers
- LED light indicates status anywhere in the workshop
- AC Remote Viewer App: for remotely viewing the display from your Smartphone with SMS sender service

Maximum safety and high-end precision/First-class service at the touch of a button: our premium units

ArcticPRO® ACX 380 (R134a) and ArcticPRO® ACX 480 (R1234yf) are the Top Level A/C stations in the series. You could not wish for more. From the ergonomic design of the hardware to the software developed by carefully analysing your daily activities in the workshop.

The integrated WiFi connection is the constant element of the entire line, which allows to fully exploit all the innovative features. The integration with MAHLE

diagnostic tools also enhance its field of action. The integration of our special APPs is innovative and useful, as it is able to control, service and remote the display: this ensures convenience and interactivity, thus making the AC recharge service a customer retention tool. Anche

ArcticPRO® ACX 380, for R134a systems, is easily convertible into R1234yf, or if necessary, also in the new R513a.

Features	Technical data
E³ – FILL E³ – PUMP E³ – CONNECT	Dimensions: 620 x 720 x 1090 mm
7" high visibility Touchscreen display	Weight: 74 kg
One-Touch liftdoor system	Reservoir capacity 20 l
Database for service data	
Automatic purging of non-condensing gas	Optional: Integrated N-Leak test Function (can be activated via GoLive); Gas identifier; ASA connectivity via Windows PC Service; VCI A/C diagnostics (SW & HW); Agricultural and construction machinery database (only ACX 380)
Oil bottles : 4 - fresh oil (PAG & POE), used oil, UV additive	
Remote assistance (RE.SOLVE - WIFI)	

ArcticPRO® ACX 255



Advantages at a glance

- Efficient and successful servicing, regardless of the vehicle and ambient temperature
- USB interface for software updates, remote diagnostics
- ACX RFID gas identifier included (external)
- VDA approved (German Association of the Automotive Industry)
- Active Oil Protection: hermetically sealed oil containers (optional)

Best-in-class with intelligent add-on function: our premium unit

ArcticPRO® ACX 255, approved by VDA, German Association of the Automotive Industry, complies with every OEM requirements.

An ample tank and the vacuum pump ensure a generous, capacity and excellent vacuum

The patented Injection charging system guarantees a degree of accuracy far in

excess of the standard requirements.

ArcticPRO® ACX 255 is equipped with an integrated gas identifier, located outside of the unit for an easier routine maintenance.

ArcticPRO® ACX 255 comes with an emergency stop button, and is also equipped with a built-in thermal printer for customer reports.

Features	Technical data
Incl. ACX RFID refrigerant analysis unit and TÜV certification	Dimensions: : 700 x 700 x 1100 mm
VDA approved	Weight: 65 kg
Color touch screen	Reservoir capacity: 20 l
Database for service data	

Accessories



ROU – Recovery Only Unit

Removes unknown and contaminated refrigerants from vehicle air conditioning systems simply and safely.

Ecological: professional and safe disposal protects people and the environment; **Economical:** the ROU is immediately ready to use together with an A/C Service unit. No other materials and supplies are required; **Efficient:** our patented internal cycle guarantees a fast service with a 95% recovery rate within 30 minutes.

ACX universal flushing unit for refrigerants R134a and R1234yf

Flushing tank with support for flexible usage – entirely independent of the A/C Service unit location and model.

Ergonomically positioned: Control sight glass to check flushing process and refrigerant purity; Flexible application: HP hose connector adapter set for various A/C Service units; Flushing adapter set (3/8" and 1/4") allows connection to all standard flushing adapters for air conditioning systems or to a system's individual components; Coupling adapter set for refrigerants R134a and R1234yf to connect the LP coupling to the flushing unit; Optional: Protective storage cover.

ACX RFID

External analysis unit for the MAHLE ACX A/C Service unit for refrigerant R1234yf and R1234yf

Offers maximum protection to A/C Service units; Safe analysis via LP coupling; Plug and play consente Plug and play allows immediate integration with the unit.; Simple, automatic operation and instant measurement result; Fully automated control via integrated software process.

IDX 500

Internal analysis unit for the MAHLE ACX A/C Service unit for refrigerant R134a and R1234yf.

Quicker than previous model; Can detect mixtures of R134a - R1234yf at any concentration.; Offers maximum protection to A/C Service units; Safe analysis via LP coupling; Plug and play allows immediate integration with the unit; Simple, automatic operation and instant measurement result; Fully automated control via integrated software process.



A/C Service units	ACX 310	ACX 320	ACX 350	ACX 380	ACX 410	ACX 420	ACX 450	ACX 480	ACX 255
Refrigerant	R134a	Convertible	Convertible	Convertible	R1234yf	R1234yf	R1234yf	R1234yf	R1234yf
Convertible to refrigerant R1234yf		+	+	+					
Convertible to refrigerant R513a		+	+	+					
Vacuum pump	HPV 0.02 mbar	HPV 0.02 mbar			HPV 0.02 mbar	HPV 0.02 mbar			
Refrigerant tank	12 L	12 L	20 L	20 L	12 L	12 L	20 L	20 L	20 L
Compressor	8 cc	8 cc	14 cc	14 cc	8 cc	14 cc	14 cc	14 cc	14 cc
Filter drier capacity	75 kg	75 kg	150 kg	150 kg	75 kg	100 kg	150 kg	150 kg	150 kg
Recovery rate	>95%	>95%	>95%	>95%	>95%	>95%	>95%	>95%	>95%
Pressure sensors	LP	LP	Tank, LP, HP	Tank, LP, HP	LP	LP	Tank, LP, HP	Tank, LP, HP	Tank, LP, HP
Oil bottles	2 (fresh oil, used oil)	2 (fresh oil, used oil)	3 + 1 fresh oil (PAG), used oil, UV additive + POE (in scope of delivery)	4 fresh oil, (PAG & POE), used oil, UV additive	2 (fresh oil, used oil)	2 (fresh oil, used oil)	3 + 1 fresh oil (PAG), used oil, UV additive + POE (in scope of delivery)	4 fresh oil, (PAG & POE), used oil, UV additive	4 fresh oil, (PAG & POE), used oil, UV additive
Containers Active Oil Protection (hermetically sealed oil bottles)		■	+	+		■	+	+	+
Oil scales		1	2 (fresh oil, used oil)	4		1	2 (fresh oil, used oil)	4	1
Operating temperature	10°C to 50°C	10°C to 50°C	10°C to 50°C	10°C to 50°C	10°C to 50°C	10°C to 50°C	10°C to 50°C	10°C to 50°C	10°C to 50°C
Power supply	230 V, 50 Hz, 800 W	230 V, 50 Hz, 800 W	230 V, 50 Hz, 800 W	230 V, 50 Hz, 800 W	230 V, 50 Hz, 800 W	230 V, 50 Hz, 800 W	230 V, 50 Hz, 800 W	230 V, 50 Hz, 800 W	230 V, 50 Hz, 800 W
Length of service hoses	3 m	4,5 m	4,5 m	4,5 m	3 m	4,5 m	4,5 m	4,5 m	3 m
Optional: Extension of service hose to	6 m	7,5 m	7,5 m	7,5 m	6 m	7,5 m	7,5 m	7,5 m	
Display	B&W 35x200 4 lines/30 characters	7" TFT color touch screen	7" TFT color touch screen	7" TFT color touch screen	B&W 35x200 4 lines/30 characters	7" TFT color touch screen	7" TFT color touch screen	7" TFT color touch screen	7" TFT color touch screen
Keypad	4 direction keys, Enter, Esc.	Touch screen	Touch screen	Touch screen	4 tasti direzionali, Enter, Esc.	Touch screen	Touch screen	Touch screen	Touch screen
Menu languages	25	25	25	25	25	25	25	25	25
Warranty	24 months	24 months	24 months	24 months	24 months	24 months	24 months	24 months	24 months
Certifications	CE, PED	CE, PED	CE, PED	CE, PED	CE, PED	CE, PED	CE, PED	CE, PED	CE, PED, TÜV, VDA approved
Noncondensable gases through air purge system	Automatic check/manual release	Automatic	Fully automatic	Fully automatic	Automatic check/manual release	Automatic	Fully automatic	Fully automatic	Fully automatic
Automatic recovery and injection of refrigerant	+	+	+	+	+	+	+	+	+
Automatic recovery of compressor oil	+	+	+	+	+	+	+	+	+
Automatic injection of UV dye			+	+			+	+	+
Manual operating mode	+	+	+	+	+	+	+	+	+
Automatic hose compensation	+	+	+	+	+	+	+	+	+
E ³ – FILL (always ready for use, regardless of the vehicle and ambient temperature)	+	+	+	+	+	+	+	+	+
E ³ – PUMP (vacuum pump oil change after 1,000 h.)	+	+	+	+	+	+	+	+	+
E ³ – CONNECT (complete recovery of refrigerant from hoses and service couplings)	■	■	+	+	■	■	+	+	+
A/C performance test (for dynamic performance testing of the A/C system in only 10 minutes with a customer report)	+	+	+	+	+	+	+	+	+
Tank pressure reading	+	+	+	+	+	+	+	+	+
Refrigerant analyzer		■	■	■	■	■	■	■	+
Compatibility with hybrid vehicles	■	■	+	+	■	■	+	+	+
Electronic car database	+	+	+	+	■	+	+	+	■
Agricultural and construction machinery database	■	■	■	■					
Nitrogen leak test function (optional external kit)	+	+			+	+			
Nitrogen leak test—integrated connection, no optional connector required, the function can be activated via GoLive			■	+			■	+	
Nitrogen leak test, optional kit required	+	+			+	+			
Forming gas leak test—integrated connection, optional connector required			■	+			■	+	
Status indicator lights		+	+	+		+	+	+	
Thermal Printer	■	■	■	+	■	■	■	+	+
Network printout via Windows PC service		+	+	+		+	+	+	
Usb interface	+	+	+	+	+	+	+	+	+
Report pdf export to USB stick	+	+	+	+	+	+	+	+	
WiFi		+	+	+		+	+	+	
Bluetooth		+	+	+		+	+	+	
ASA connectivity via Windows PC service		■	■	■		■	■	■	
VCI A/C Diagnostics (SW & HW)			■	■			■	■	
AC Remote Viewer app with SMS service			■	+			■	+	
Remote assistance	USB	WiFi	WiFi	WiFi	USB	WiFi	WiFi	WiFi	USB

Available + Optional ■

Алматы (727)345-47-04
Ангарск (3955)60-70-56
Архангельск (8182)63-90-72
Астрахань (8512)99-46-04
Барнаул (3852)73-04-60
Белгород (4722)40-23-64
Благовещенск (4162)22-76-07
Брянск (4832)59-03-52
Владивосток (423)249-28-31
Владикавказ (8672)28-90-48
Владимир (4922)49-43-18
Волгоград (844)278-03-48
Вологда (8172)26-41-59
Воронеж (473)204-51-73
Екатеринбург (343)384-55-89

Иваново (4932)77-34-06
Ижевск (3412)26-03-58
Иркутск (395)279-98-46
Казань (843)206-01-48
Калининград (4012)72-03-81
Калуга (4842)92-23-67
Кемерово (3842)65-04-62
Киров (8332)68-02-04
Коломна (4966)23-41-49
Кострома (4942)77-07-48
Краснодар (861)203-40-90
Красноярск (391)204-63-61
Курск (4712)77-13-04
Курган (3522)50-90-47
Липецк (4742)52-20-81

Магнитогорск (3519)55-03-13
Москва (495)268-04-70
Мурманск (8152)59-64-93
Набережные Челны (8552)20-53-41
Нижегород (831)429-08-12
Новокузнецк (3843)20-46-81
Новосибирск (383)227-86-73
Омск (3812)21-46-40
Орел (4862)44-53-42
Оренбург (3532)37-68-04
Пенза (8412)22-31-16
Петрозаводск (8142)55-98-37
Псков (8112)59-10-37
Пермь (342)205-81-47

Ростов-на-Дону (863)308-18-15
Рязань (4912)46-61-64
Самара (846)206-03-16
Санкт-Петербург (812)309-46-40
Саранск (8342)22-96-24
Саратов (845)249-38-78
Севастополь (8692)22-31-93
Симферополь (3652)67-13-56
Смоленск (4812)29-41-54
Сочи (862)225-72-31
Ставрополь (8652)20-65-13
Сургут (3462)77-98-35
Сыктывкар (8212)25-95-17
Тамбов (4752)50-40-97
Тверь (4822)63-31-35

Тольятти (8482)63-91-07
Томск (3822)98-41-53
Тула (4872)33-79-87
Тюмень (3452)66-21-18
Улан-Удэ (3012)59-97-51
Ульяновск (8422)24-23-59
Уфа (347)229-48-12
Хабаровск (4212)92-98-04
Чебоксары (8352)28-53-07
Челябинск (351)202-03-61
Череповец (8202)49-02-64
Чита (3022)38-34-83
Якутск (4112)23-90-97
Ярославль (4852)69-52-93

Россия +7(495)268-04-70

Казахстан +7(727)345-47-04

Беларусь +(375)257-127-884

Узбекистан +998(71)205-18-59

Киргизия +996(312)96-26-47

<https://mahle.nt-rt.ru> || men@nt-rt.ru